

DE-16-001248/00 pos. 1

Bevel helical Gear reducer – G series

Application given data

N.A.

Designation: R C2I 140 UO2A - 20,4 B3
 Mounting position B3, $n_1 = 1400$ [min⁻¹]

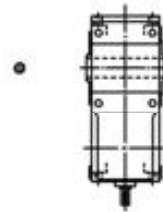
Standard product : Yes

Accessories and special designs

Reducer/Gearmotor specifications

| | | |
|--------------------------------------|----------------------|------|
| Transmission ratio i | | 20,4 |
| Output speed n_2 | [min ⁻¹] | 68,6 |
| Input speed n_1 | [min ⁻¹] | 1400 |
| Input power P_1 | [kW] | N.A. |
| Output torque M_2 | [N m] | N.A. |
| Service factor f_s | | N.A. |
| Efficiency | | 0,94 |
| Mass of gear reducer (without motor) | [kg] | 111 |
| Previsional lubricant quantity | [l] | 6,6 |
| ISO viscosity grade (T 10-40 °C) | [cSt] | 220 |

Top view with M.P. B3



Nominal Data

| | | |
|----------------------------------|-------|------|
| Nominal input power P_{N1} | [kW] | 28,1 |
| Nominal output power P_{N2} | [kW] | 26,4 |
| Nominal output torque M_{N2} | [N m] | 3680 |
| Maximum output torque M_{2max} | [N m] | 5888 |

Verifications

| | |
|------------------------------|------|
| Safety factor on M_{2peak} | N.A. |
| Thermal power verification | N.A. |
| External loads verification | N.A. |

N.A: Not Applied

The results of calculations in this document have no validity in terms of warranty. Computing: a) are theoretical, b) are based on the assumptions for optimal working conditions specified on Rossi catalogues, c) they rely on the truthfulness of given input data for which the customer is the only responsible, d) any omitted data or not taken into account by the customer voids the entire report. All contents, and information in this document are sole property of Rossi S.p.A. It cannot be disclosed for purposes other than the scope for which it has been generated under the agreement between the Customer and an authorized Rossi representative. It cannot be reproduced (in whole or in part) without explicit written permission by Rossi S.p.A. legal representative, and in this case the intellectual property of the document remains solely of Rossi S.p.A.

Germany

Rossi GmbH
 e-mail: info.germany@rossi-group.com
www.rossi-group.com/germany

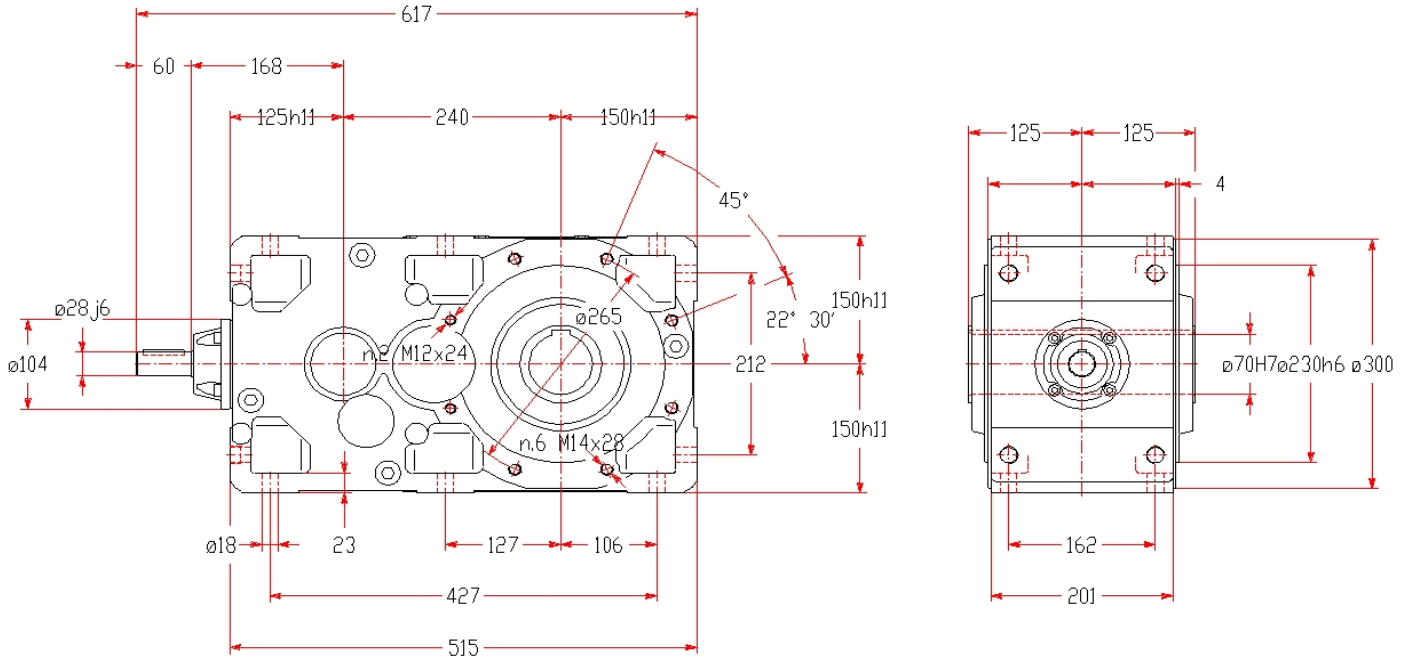
Rossi S.p.A.

Via Emilia Ovest 915/A - Modena - Italy
 Tel. 059 330288 - Fax 059 827774
info@rossi-group.com - www.rossi-group.com

DE-16-001248/00 pos. 1

Bevel helical Gear reducer - catalogue G

Main Dimensions [mm] (only for standard gearbox, in case of non-standard design see the drawing on the next page)



Informations and warnings:

Mounting nuts: M16 UNI 5588. With screw UNI 5737, see pag. 370 Cat. G series

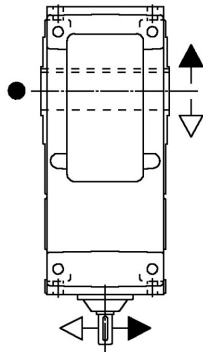
The results of calculations in this document have no validity in terms of warranty. Computing: a) are theoretical, b) are based on the assumptions for optimal working conditions specified on Rossi catalogues, c) they rely on the truthfulness of given input data for which the customer is the only responsible, d) any omitted data or not taken into account by the customer voids the entire report. All contents, and information in this document are sole property of Rossi S.p.A. It cannot be disclosed for purposes other than the scope for which it has been generated under the agreement between the Customer and an authorized Rossi representative. It cannot be reproduced (in whole or in part) without explicit written permission by Rossi S.p.A. legal representative, and in this case the intellectual property of the document remains solely of Rossi S.p.A.

DE-16-001248/00 pos. 1

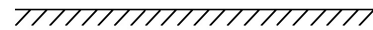
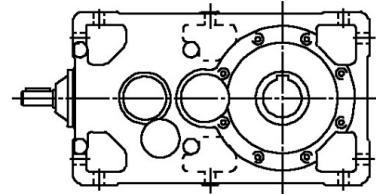
Bevel helical Gear reducer - catalogue G

Design: UO2A

Mounting position: B3

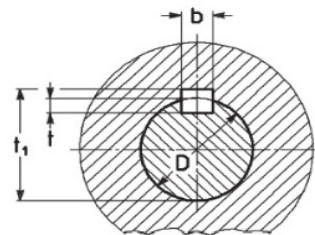
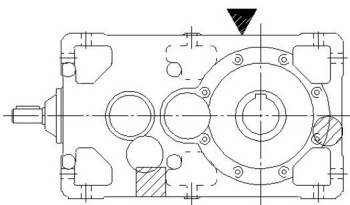


● Groove side



Plugs position (supplied without oil as standard)

Standard hollow low speed shaft

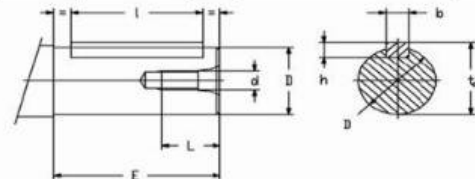


| D | b x h x l | b | t | t ₁ |
|--------|---------------|----|---|----------------|
| ø70 H7 | 20 x 12 x 180 | 20 | 8 | 74,3 |

- ▼ = filler plug (in view/not in view)
- = level plug (in view/not in view)
- ▨ = drain plug (in view/not in view)

High speed shaft: ø28j6

| D | E | d | b x h x l | t ₀ |
|--------|----------|-----|------------------|----------------|
| ø19 j6 | 40 (30) | M6 | 6 x 6 x 36 (25) | 22 |
| ø24 j6 | 50 (36) | M8 | 8 x 7 x 45 (25) | 27 |
| ø28 j6 | 60 | M8 | 8 x 7 x 45 | 31 |
| ø32 k6 | 80 (58) | M10 | 10 x 8 x 70 (50) | 35 |
| ø38 k6 | 80 (58) | M10 | 10 x 8 x 70 (50) | 41 |
| ø48 k6 | 110 (82) | M12 | 14 x 9 x 90 (70) | 52 |



The results of calculations in this document have no validity in terms of warranty. Computing: a) are theoretical, b) are based on the assumptions for optimal working conditions specified on Rossi catalogues, c) they rely on the truthfulness of given input data for which the customer is the only responsible, d) any omitted data or not taken into account by the customer voids the entire report. All contents, and information in this document are sole property of Rossi S.p.A. It cannot be disclosed for purposes other than the scope for which it has been generated under the agreement between the Customer and an authorized Rossi representative. It cannot be reproduced (in whole or in part) without explicit written permission by Rossi S.p.A. legal representative, and in this case the intellectual property of the document remains solely of Rossi S.p.A.